

The background of the poster is a vibrant, warm-toned image of a circus performance. In the foreground, a male acrobat in a black top hat and white shirt with a black bow tie is holding a female acrobat in a black leotard. They are both looking down, and the woman is in a dramatic, arched pose. In the background, another acrobat is visible, suspended in the air, holding a large, flowing pink fabric. The scene is filled with falling confetti and is lit with warm, orange and yellow lights, creating a festive and theatrical atmosphere.

*GuestEnts Presents*

# CIR**Q**US QUATTRO

CRUISE HEADLINER SHOW



## ABOUT CIRQUE QUATTRO

Cirque Quattro is a theatrical circus company featuring the UK's finest aerial and cabaret circus performers. Between them they have performed in over forty countries, in both solo settings and within large, world-renowned companies.

They have performed at prestigious venues including The London Palladium, Royal Albert Hall and Macau's Studio City.

Quattro's bespoke and original shows are directed by London theatre director Samuel Hopkins, with circus direction by Danny Ash, associate at the National Centre for Circus Arts.

The group offers two distinct shows for their cruise performances, each with an individual flavour. *Rouge* showcases the raucous energy and fun of Parisian cabaret and traditional circus, while *The Deep* is a dark and dramatic contemporary show taking audiences on a voyage below the waves.

The four-person cast format allows the group to create varied shows with multiple specialisms and skills on display, captivating audiences' attentions while maintaining an intimate, theatrical feel.

The group always travels with one rigging expert as part of the cast. This allows them to bring genuine high-flying circus to any theatre at sea. With the standard of cruise entertainment ever on the rise and production values always increasing, Cirque Quattro's shows allow even smaller vessels and lines to offer the very best in entertainment and compete with the most expensive and elaborate shows around.



# THE SHOWS

Each of the company's shows have been given an individual identity and theme, ensuring that both nights of entertainment are completely different and offer true variety.



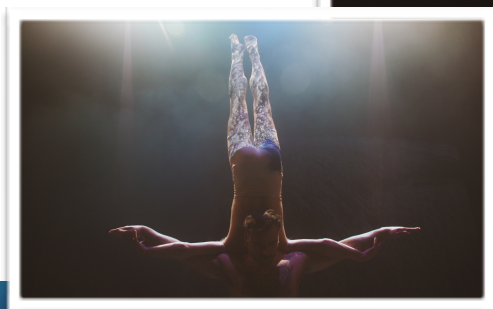
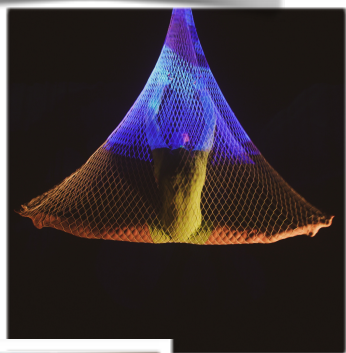
## VIDEO (CLICK)

The group's first show, *Rouge*, is a feast of jazz, Parisian glamour and riotous fun. The visuals are sumptuous and striking, while a fast-paced score quickly whisks the audience through an exciting array of hoop, silks, straps and balancing acts.



By contrast, *The Deep* is a powerful contemporary circus spectacular. Using evocative music and beautiful modern aerialist skills, this moving show is an ode to the ocean. The cast bring their audience on a voyage through the changing seas, exploring humans' relationship with water and how it connects the world.

# THE DEEP



# THE IMPORTANT INFO



Shows: 2 x 45 minutes

Orchestra Required: No

Personnel: 4

Cabins: 2

Check-in Luggage: 2 each

Base: London, U.K.

Airports: Heathrow, Gatwick, Luton

**For Bookings**

Agent: GuestEnts Ltd

Contact: [info@guestents.com](mailto:info@guestents.com)

Phone: Andrew Linnie +447446407801

